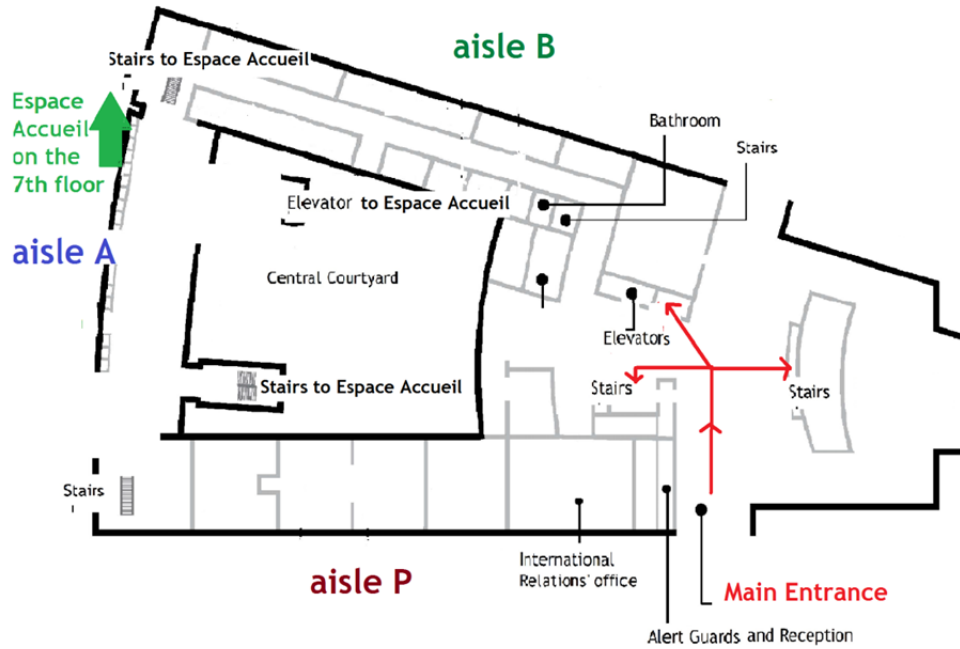


# MAPS AND DIRECTIONS

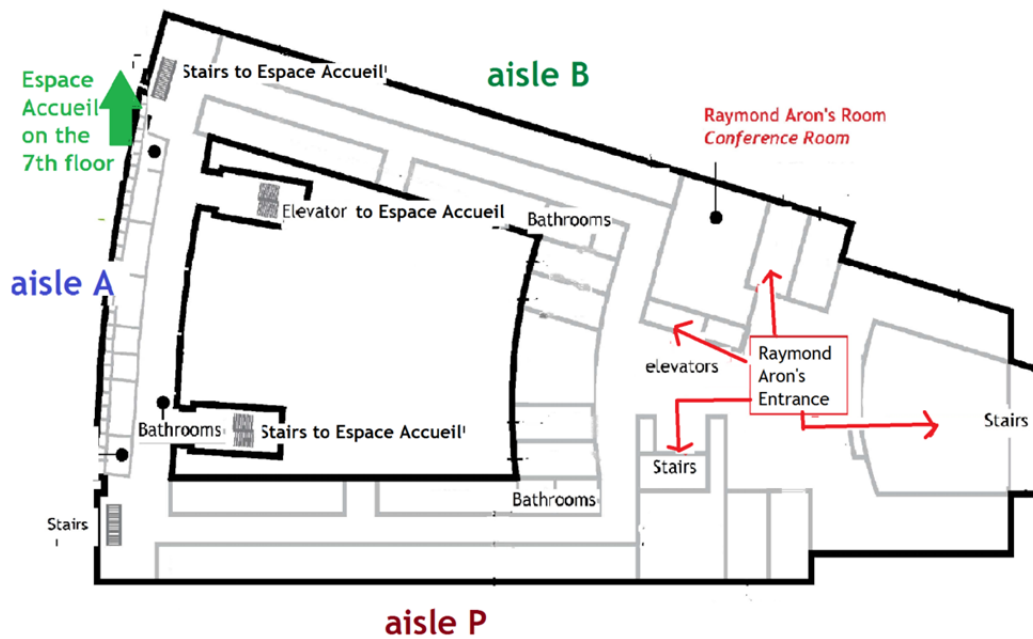
## Ground Floor

Your arrival at University of Paris-Dauphine



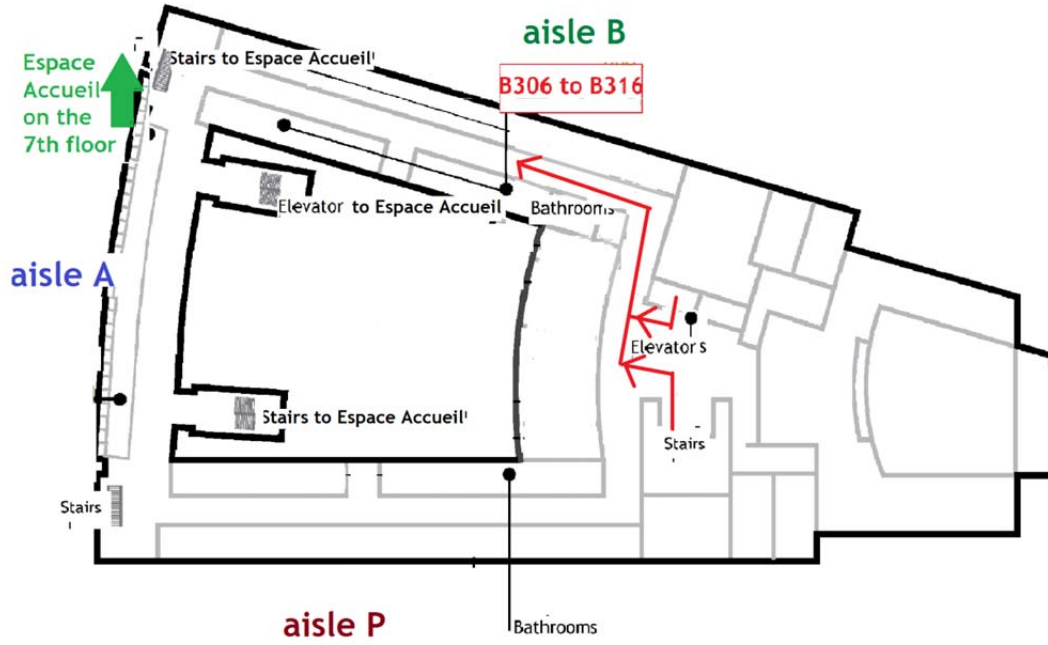
## Second Floor

Plenary sessions & Registration

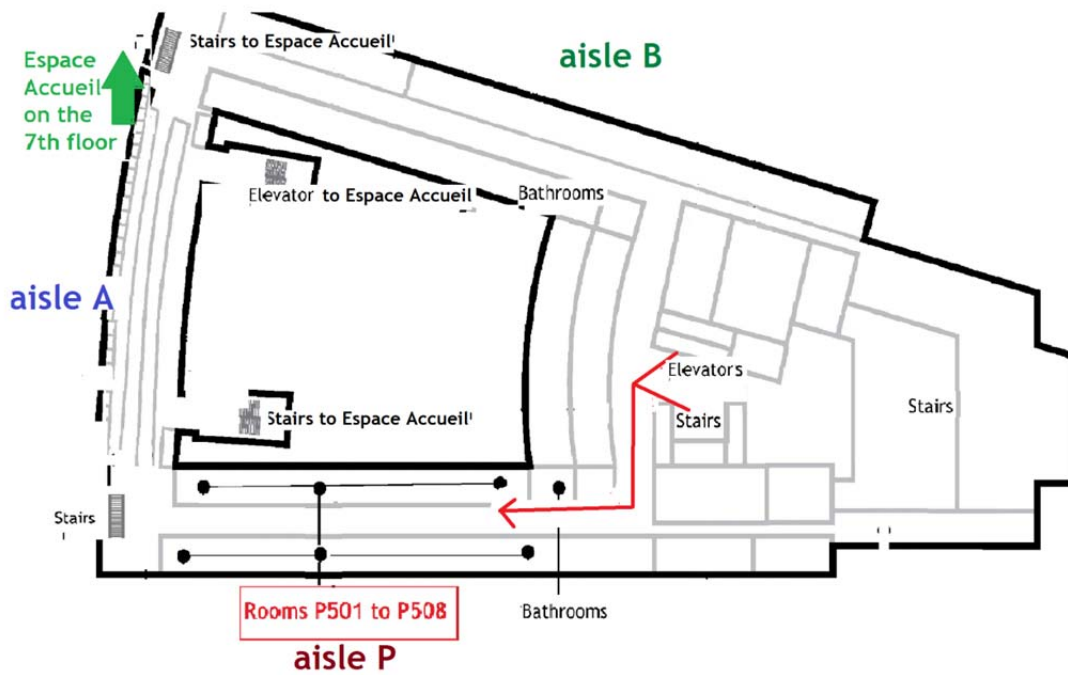


# MAPS AND DIRECTIONS

## 3rd Floor Thursday 2nd July



## 5th Floor Friday 3rd July

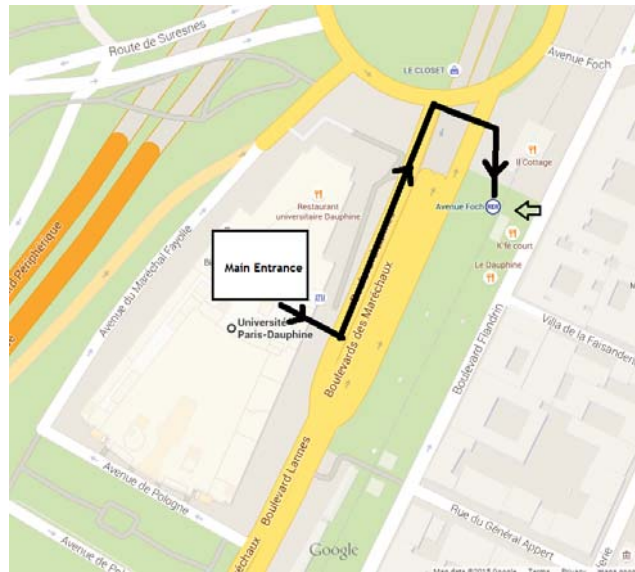


# MAPS AND DIRECTIONS

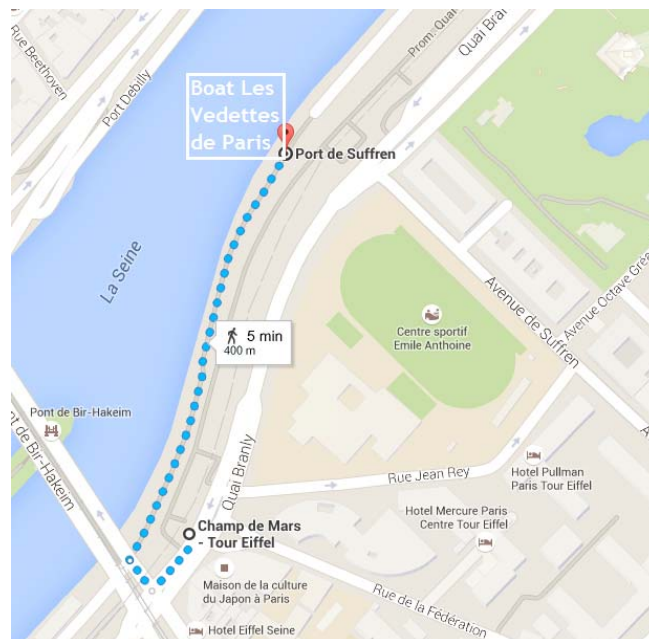
## Itinerary from the University of Paris-Dauphine to the conference dinner

The conference dinner will be held on the Vedettes de Paris boat at Port de Suffren, 75007 Paris.

To get to the restaurant, take the RER C “Avenue Foch” (towards Massy Palaiseau) located just in front of the University Paris-Dauphine and descend at “Champ de Mars- Tour Eiffel”. The journey takes approximately 10 minutes.



From the “Champ de Mars- Tour Eiffel” RER train station, it is a short walk along the banks of the Seine (about 5 minutes) to the restaurant boat at the foot of the Eiffel Tower.



We wish you a pleasant conference dinner!